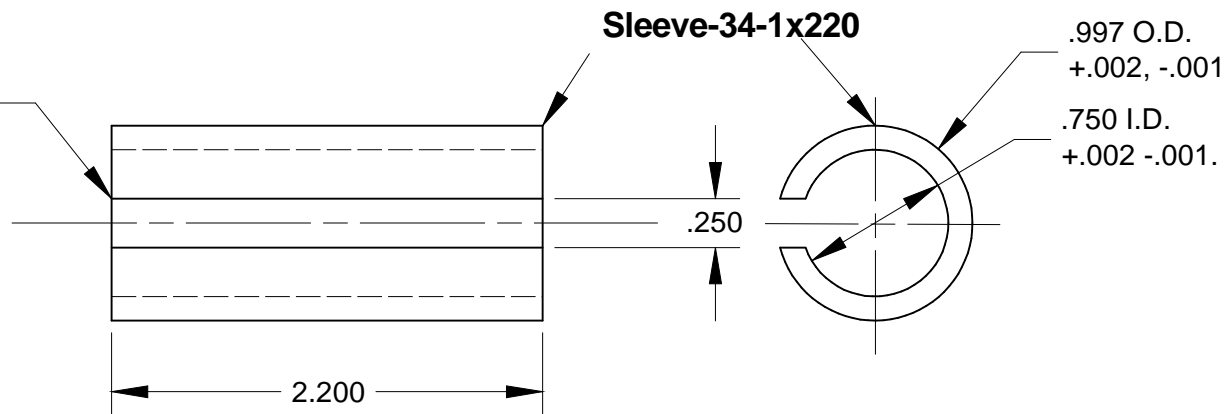


Remove any burrs
both ends



Rev. 1, O.D. was .997 and is now .992. 05/27/08 John B.

Rev. 2 Redesigned keystock. Wade 11/11/08

Rev. 3 O.D. was .992 added tolerance to I.D. Wade 1/8/10

Rev. 4- Key OL was .281 and is now .344. The step length was .188 and now is .25 Radney P 1/20/14

Rev. 5- Added note to remove burrs. Added tolerance for .188 dim on step key; Wade 3/18/15

Rev. 6 - Identification Ketstk-T-.188x.25x2.20x.244 was Step Key. Sleeve-34-1x220 was Sleeve; Wade 4/20/15

Rev7 - key stock was removed ; D. SANDERS, 1/30/17



2347 South 800 East
Dunkirk, IN 47336
(765) 768-6725

www.smallenginewarehouse.com

This document contains information proprietary to Small Engine Warehouse and has been furnished for communication only. This drawing is only to be used as approved by Small Engine Warehouse. No contractual agreements are given or implied with the issue of this document.

TITLE .75 I.D. Sleeve and Key Stock

SIZE
A

DATE
03/13/08

DWG NO
Sleeve-34-1x220

REV
7

SCALE NTS

John B.

SHEET 1 of 1